

The background is a photograph of a grey metal locker. It has several vertical lines and horizontal slots. There are five pieces of colored tape (yellow, red, orange, blue, green) arranged horizontally across the upper part of the locker. A green earmuff is hanging from a hook in the center of the locker. The text 'WORKSAFE' is overlaid at the top left, and 'GasNZ Industry Forum 2018' is overlaid in the center. At the bottom left, there is text identifying Tony Hetherington as the Head of High Hazards, Energy and Public Safety, dated November 2018.

**WORKSAFE**

# GasNZ Industry Forum 2018

---

**Tony Hetherington**  
Head of High Hazards, Energy and Public Safety  
**November 2018**



	2016	2017
Fatalities rate (3 year rolling average)	2.1	2.1
Fatalities count (Annual count)	55	65
Serious non-fatal rate (Annual comparison)	14.3	16.0



	2018
Fatalities notified YTD	26



**LEADERSHIP**



**RISK  
MANAGEMENT**

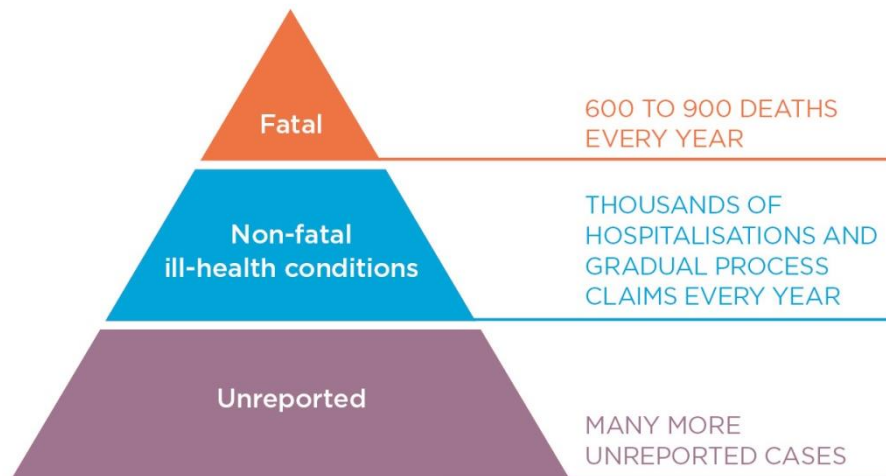


**WORKER  
ENGAGEMENT**



RISK  
MANAGEMENT

# Health





RISK  
MANAGEMENT

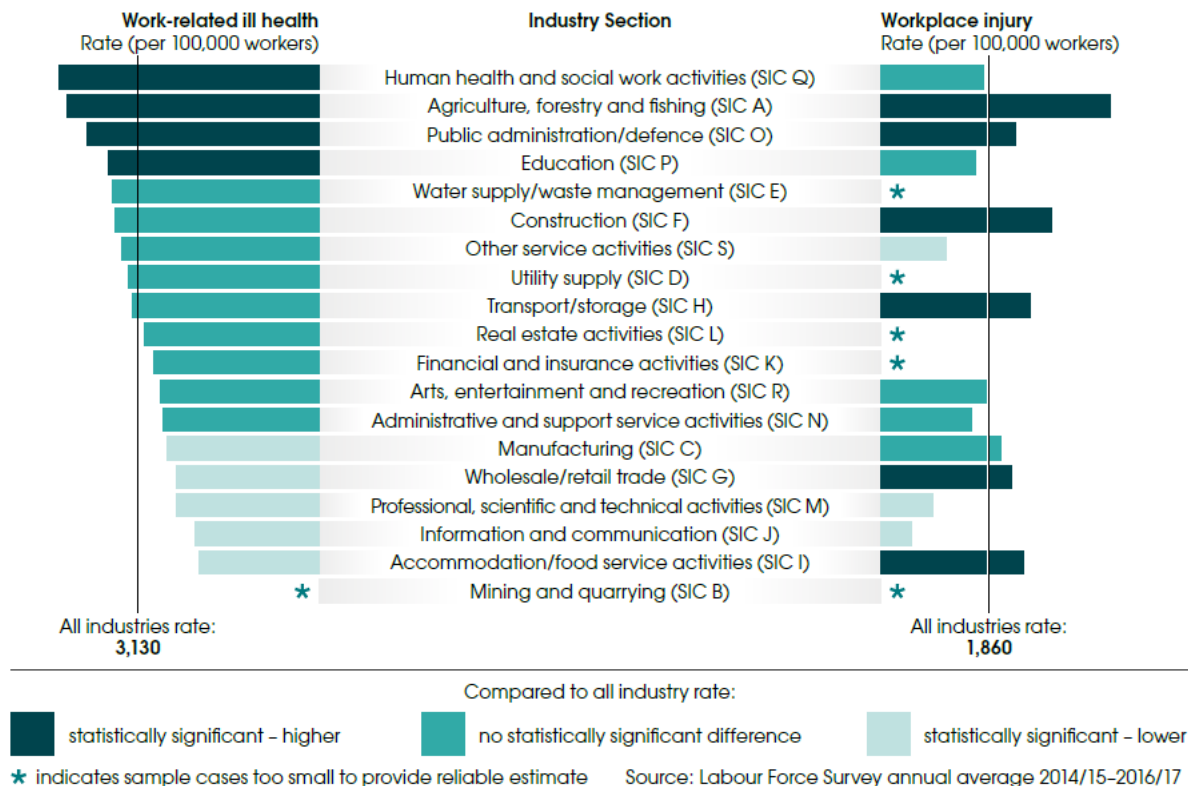
# Health





# Industries

## Rate of self-reported work-related ill health and non-fatal injury by industry





RISK  
MANAGEMENT

## Psychosocial

40,000

notifications of health and  
safety incidents over the  
last 4 years

159 were recorded  
as bullying

NEARLY HALF  
REFERRED ON  
(POLICE, ERA)  
OR TO PCBU TO  
SELF-MANAGE

JUST UNDER  
HALF NFA

13  
INVESTIGATED -  
NO PROSECUTIONS



WORKER  
ENGAGEMENT



## What we are doing



HEALTH & SAFETY  
AT WORK ACT

**WORKSAFE**  
NEW ZEALAND | HAKI HAUARU  
AOTEAROA



**SAFE+**  
MAKING HEALTH AND SAFETY WORK

# SAFE+

MAKING HEALTH AND SAFETY WORK



Resources and  
Guidance

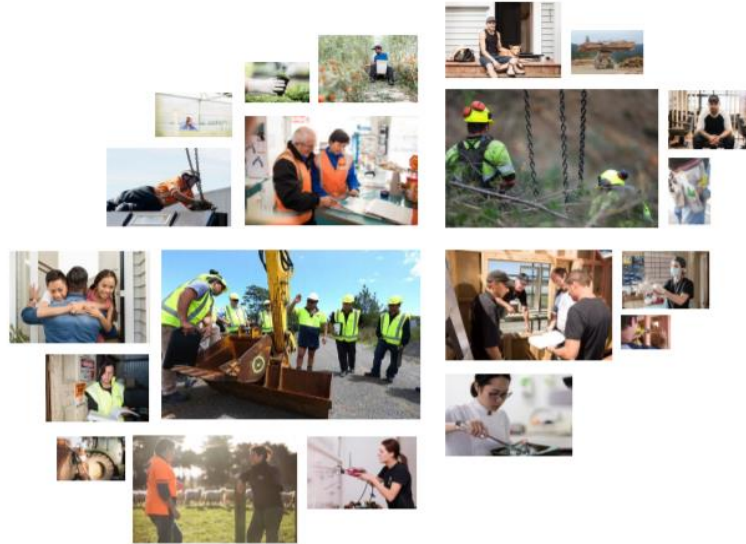


Onsite Assessment  
and Advisory Service



Online  
Self-Assessment

# What we are doing



## Health and Safety at Work Strategy 2018-2028

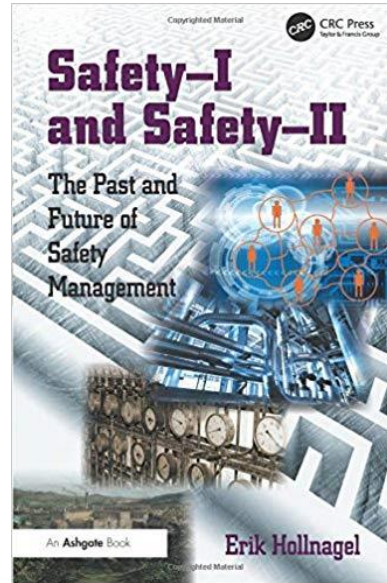
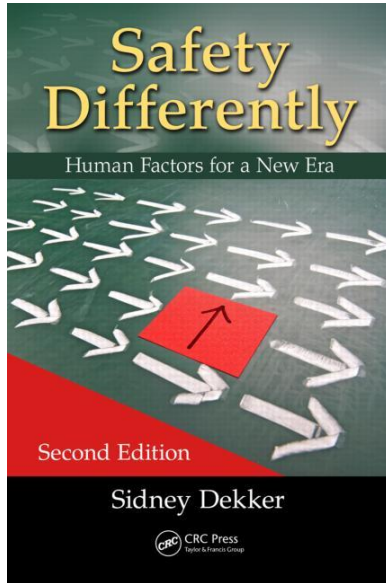
### CONSULTATION

April 2018

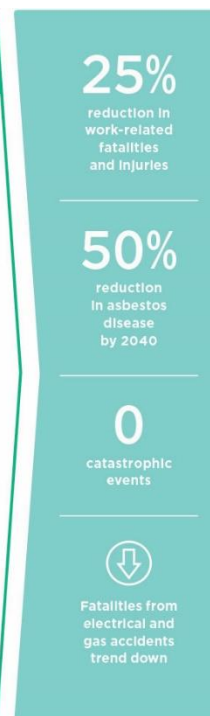
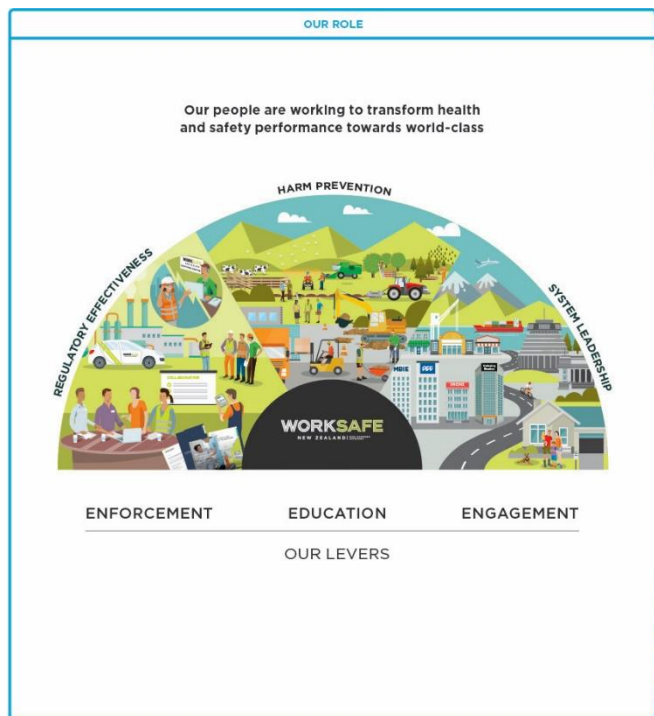


New Zealand Government  
Te Kāwanatanga o Aotearoa

# Innovation



# WorkSafe's strategy 2018-2022:



What we are doing

## Single-minded focus

HARM PREVENTION



# **CERTIFICATION**

## **Sites requiring Location Compliance Certificate (LCC)**

**All New Zealand**

**14,357**

**LPG**

**4,816**